

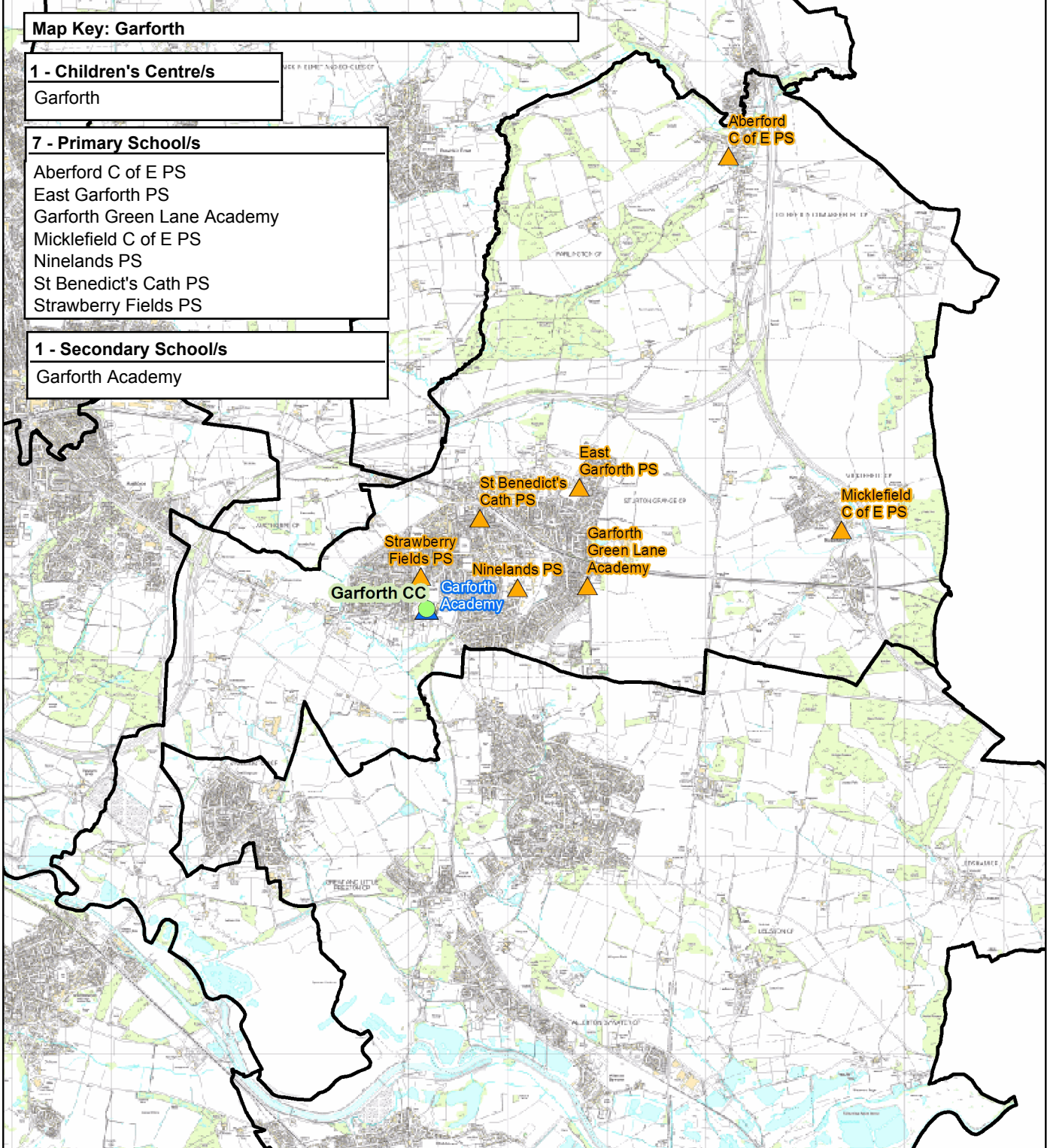
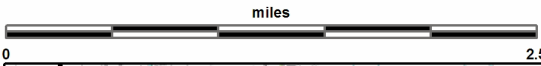
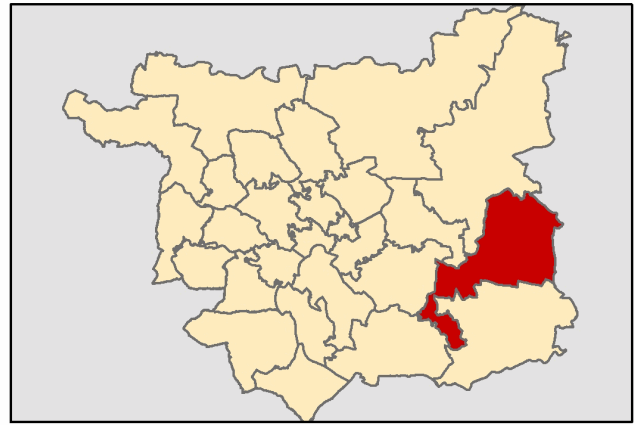
Garforth

This report was produced by the Children's Performance Service on 01/06/2012. The information in these overviews are based on the cluster data profile version 5.12.

For more information telephone 0113 39 50701 or email educ.pmi@leeds.gov.uk or visit:

www.leedsinitiative.org/ClusterDataProfile.aspx

The map to the right gives the position of the cluster in Leeds. The map below shows the location of the Children's Centres, Primary and Secondary Schools in the cluster.



Cluster Overviews key**Data Period:**

The codes in the key to the right are for the time periods that the data in these reports cover. They will appear next to all data sets.

Academic Year

Calendar Year

Financial Year

Snapshot

Other

DP:A**DP:C****DP:F****DP:S****DP:O****Cluster Overview**

Data Source: January School Census		Total Number on roll			DP: S
Primary Schools	DFE	2010	2011	2012	
Aberford C of E Primary School	3030	102	94	89	
East Garforth Primary School	2395	351	346	334	
Garforth Green Lane Primary Academy	2396	369	384	384	
Micklefield C of E Primary School	3040	96	119	118	
Ninelands Primary School	2397	427	430	441	
St Benedict's Catholic PS	3365	223	218	225	
Strawberry Fields Primary School	3917	338	338	356	
Total		1906	1929	1947	

Data Source: January School Census		Total Number on roll			DP: S
Secondary Schools	DFE	2010	2011	2012	
Garforth Academy	4112	2008	2011	1998	
Total		2008	2011	1998	

Data Source: Children's Services - Feb 2012		DP: S
Children's Centre reach area registration for families of children aged 0-5	% Registered	
Cluster	66.75	
Wedge	61.66	
Leeds all	60.23	

Data Source: Children's Services	
Children's Centre	Ofsted ID
Garforth	

Data Source: The office of National Statistics population mid-year estimates									DP: S
Population Estimates	0-15			Working Age			60/65+		
	2008	2009	2010	2008	2009	2010	2008	2009	2010
Cluster	3218	3190	3152	11434	11372	11421	4176	4304	4394
Wedge	47897	48099	48486	176361	180282	184227	45628	46348	47187
Leeds all	132741	133396	134493	516578	522769	531036	129937	131536	133240

Data Source: NHS Leeds													DP: S
Under Fives	September 2010						September 2011						
	0-1	1-2	2-3	3-4	4-5	Total	0-1	1-2	2-3	3-4	4-5	Total	
Cluster	148	146	162	173	173	802	136	156	155	167	213	827	
Wedge	3707	3509	3422	3243	3351	17232	3579	3695	3530	3416	3275	17495	
Leeds all	10202	9848	9478	9195	9113	47836	9996	10173	9787	9438	9319	48713	

Data Source: January School Census												DP: S
Percentage of pupils who are:	Black and Minority Ethnic			English as an Additional Language			Free School Meal Eligible			Special Education Needs		
	2010	2011	2012	2010	2011	2012	2010	2011	2012	2010	2011	2012
Primary												
Cluster school	3.7	4.4	4.8	1.6	1.4	1.6	7.9	8.9	8.9	12.6	14.5	14.6
Cluster residence	3.7	4.3	4.6	1.4	1.3	1.6	9.5	9.6	9.8	13.0	15.0	15.2
Wedge school	13.1	14.1	16.1	8.8	9.5	10.2	21.4	22.2	22.2	19.0	18.6	18.2
Total primary	23.6	24.8	26.4	15.8	16.5	17.1	21.5	22.2	22.0	17.8	17.8	17.4
Secondary												
Cluster school	3.5	3.3	3.2	1.1	1.1	1.2	5.1	5.1	5.8	9.2	9.6	9.8
Cluster residence	3.3	3.1	2.9	1.3	1.3	1.3	5.4	5.4	4.9	10.9	10.8	10.6
Wedge school	7.5	8.1	9.0	4.3	4.8	5.5	19.1	19.2	19.1	22.0	19.3	21.4
Total secondary	18.6	19.4	20.4	10.4	10.0	11.1	19.0	19.4	19.5	21.4	20.4	19.0
Leeds all	21.4	22.5	23.9	13.4	13.7	14.6	20.6	21.1	21.1	20.0	19.6	18.7

Data Source: HM Revenue and Customs - taken on 31st August 2007-2009										DP: S
Child Poverty	Number of children (under 16) in families in receipt of CTC or IS/JSA			Number of children (all ages) in families in receipt of CTC or IS/JSA			Number of children in poverty, by age of youngest child, 2009			
	2007	2008	2009	2007	2008	2009	0-4	5-10	11-15	16-19
Cluster	235	230	295	280	285	325	175	85	60	5
Wedge	10885	10860	11645	12055	12130	13000	7265	3380	1805	550
Leeds all	30235	29700	31030	33690	33300	34965	18720	9640	5115	1490

Data Source: Children's Services - Summer Term 2011					DP: S	
Nursery Education Grant Claims	Number of eligible children	Number of: Claims by childcare setting			Resident Claims	Non Resident Claims
Cluster	263		343		262	81
Leeds all	14500		13851		9704	4148

Data Source: January School Census and 2010 Index of Multiple Deprivation										DP: S
IMD	% of pupils resident in most deprived areas	3% most deprived			10% most deprived			20% most deprived		
		10	11	12	10	11	12	10	11	12
Primary										
Cluster school		0.2	0.2	0.4	0.5	0.3	0.6	0.5	0.7	1.0
Cluster residence		0.0	0.0	0.0	0.0	0.0	0.0	0.0	0.0	0.0
Wedge school		7.7	8.1	7.9	26.4	25.6	26.0	32.3	34.4	34.8
Total primary		8.2	8.4	8.3	28.1	27.1	27.3	36.6	37.6	38.0
Secondary										
Cluster school		0.1	0.2	0.3	1.2	1.2	1.0	2.0	1.7	1.7
Cluster residence		0.0	0.0	0.0	0.0	0.0	0.0	0.0	0.0	0.0
Wedge school		6.5	7.7	7.8	22.6	22.4	22.8	27.9	30.4	30.7
Total secondary		7.0	7.5	7.6	24.0	23.5	23.8	32.3	33.5	33.6
Leeds all		7.7	8.0	8.0	26.4	25.7	25.9	34.8	35.9	36.2

Data Source: January School Census and CACI ACORN											DP: S
KEY: Wealther Achievers(WA), Urban Prosperity (UP), Comfortably Off (CO), Moderate Means (MM), Hard Pressed (HP)											
Percentage of pupils in each ACORN category	2011					2012					
	WA	UP	CO	MM	HP	WA	UP	CO	MM	HP	
Primary											
Cluster school	18.7	0.4	54.8	12.0	13.5	18.8	0.4	53.5	12.5	14.2	
Cluster residence	16.1	0.1	57.6	13.4	12.3	15.8	0.3	56.4	13.6	13.5	
Wedge school	12.5	1.1	31.1	17.7	36.9	12.2	1.3	30.7	17.9	37.3	
Total primary	15.4	5.9	27.8	15.8	34.3	15.0	6.0	27.7	15.9	34.6	
Secondary											
Cluster school	22.8	0.1	53.8	10.3	11.9	21.5	0.2	55.4	10.4	11.6	
Cluster residence	20.1	0.1	59.8	10.8	8.5	19.5	0.1	61.5	10.5	7.6	
Wedge school	14.4	0.8	32.9	16.0	35.3	13.9	0.8	32.9	16.0	35.6	
Total secondary	17.1	5.2	29.7	14.7	32.5	16.9	5.3	29.8	14.7	32.6	
Leeds all	16.1	5.6	28.5	15.4	33.6	15.8	5.7	28.5	15.4	33.8	

Data Source: DWP information Directorate													DP: F
KEY: Job Seekers Allowance (JSA), Incapacity Benefit (IB), Lone Parent Benefit (LPB), Total Out of Work (TOW)													
Unemployment Percentage of working age people in receipt of:	2009				2010				2011				
	JSA	IB	LPB	TOW	JSA	IB	LPB	TOW	JSA	IB	LPB	TOW	
Cluster	2.4	4.4	0.9	7.9	2.2	4.3	0.9	7.6	1.8	4.2	0.8	7.1	
Wedge	4.8	6.6	2.0	13.9	4.5	6.4	1.9	13.4	4.5	6.4	1.7	13.2	
Leeds all	4.4	5.9	1.8	12.6	4.3	5.8	1.7	12.3	4.2	5.8	1.5	12.1	

Data Source: AXCIOM Lifestyle Survey 2009-2011													DP: S																	
	Property type by %									Length of residence by %																				
	Owned			Rented - Council			Rented - Private			Less than 1 year			2-5 years			More than 5 years														
	09	10	11	09	10	11	09	10	11	09	10	11	09	10	11	09	10	11												
Cluster	81.2	81.2	14.0	10.8	11.2	69.0	7.9	7.6	0.1	3.9	4.3	0.8	14.8	19.0	12.6	81.3	76.7	86.6												
Wedge	62.1	62.3	39.5	25.0	24.7	53.4	12.9	13.0	0.0	8.0	6.3	4.7	20.9	20.9	19.4	71.1	72.8	75.9												
Leeds all	61.5	61.6	39.0	24.0	23.9	61.2	14.5	14.6	0.0	7.9	8.1	5.1	20.3	20.0	18.5	71.9	71.9	76.4												
Income by %	<10k			10-20k			20-30k			30-40k			40-50k			50k+														
	09	10	11	09	10	11	09	10	11	09	10	11	09	10	11	09	10	11												
Cluster	13	11	12	19	17	22	15	16	13	23	12	21	8	30	13	21	14	19												
Wedge	20	19	17	21	20	23	17	15	17	16	19	16	13	14	13	13	14	13												
Leeds all	20	18	18	21	20	23	16	15	16	15	18	17	14	13	13	14	16	14												
Struggling with payments by %	Food									Bills			Mortgage																	
				09			10			11			09			10			11											
Cluster				7.4			7.6			3.1			8.4			6.3			5.0			1.5			0.9			1.2		
Wedge				17.1			9.9			6.4			16.3			11.8			8.4			2.5			2.5			1.8		
Leeds all				15.9			10.8			6.4			16.3			13.0			8.3			2.2			2.2			1.7		

Being Healthy

Data Source: NHS Leeds													DP: Various - Listed with each report					
Birth Data	3 year rolling average of births below 2.5kg						Number and rate of conceptions per 1000 15-17 year olds											
	% low birth weight babies						Number			Rate								
	2006-08		2007-09		2008-10		June to May			2008-09		2009-10						
Cluster	5.9		5.5		6.2		Cluster			19		22		28		30		
Wedge	7.7		7.7		7.6		Wedge			472		459		48		48		
Leeds all	7.8		7.8		7.6		Leeds all			1220		1145		45		43		
DP: C	% of women receiving a health and social care needs assessment at 12 weeks as a percentage of live births in the same year						DP: F	% Initiating breastfeeding April to March			% breastfeeding at 6 weeks April to March							
	2009		2010		2011			2009-10		2010-11		2009-10		2010-11				
Cluster	87.5		91.4		90.6		72.7		66.9		46.0		48.1					
Wedge	82.4		82.7		84.9		62.1		59.8		34.9		34.7					
Leeds all	81.6		82.9		84.0		67.6		65.1		40.4		39.3					
DP: C	Number of emergency admissions by age group 2007-11						Number of emergency admissions to hospital for injury, poisoning and certain other consequences of external causes by age group											
	0-4		5-10		11-18		0-4		5-10		11-18							
Cluster	473		152		419		50		44		132							
Wedge	10977		3008		6552		1278		922		2455							
Leeds all	29793		8247		18194		3419		2522		6711							
Immunisation Data	% of 2 year olds receiving vaccinations in quarter 3 for:						% of 5 year olds receiving vaccinations in quarter 3 for:											
	Diphtheria			MMR			Diphtheria			MMR								
	09-10	10-11	11-12	09-10	10-11	11-12	09-10	10-11	11-12	09-10	10-11	11-12						
Cluster	100	95	100	94	86	100	100	100	97	100	100	95						
Wedge	96	96	98	84	86	95	97	96	97	91	93	97						
Leeds all	96	96	97	86	88	94	95	94	96	91	91	95						

Data Source: National Child Measurement Programme													DP: A					
Obesity	Obesity in Reception						Obesity in Year 6											
	% Obese			% Obese or overweight			% Obese			% Obese or overweight								
	08-09	09-10	10-11	08-09	09-10	10-11	08-09	09-10	10-11	08-09	09-10	10-11						
Cluster	7.9	8.2	8.9	18.8	24.9	29.0	20.6	18.6	16.2	33.1	32.8	30.8						
Wedge	9.0	10.2	9.6	20.8	23.4	23.9	20.1	20.0	20.6	34.7	35.0	34.8						
Leeds all	9.4	10.2	9.7	21.7	23.7	23.4	20.3	20.7	20.0	34.3	35.1	34.3						
Obesity	Obesity in Reception						Obesity in Year 6											
	3 year average 2008-2011						3 year average 2008-2011											
	% Obese			% Obese or overweight			% Obese			% Obese or overweight								
Cluster	8.33			24.25			18.45			32.24								
Wedge	9.61			22.74			20.24			34.83								
Leeds all	9.77			22.96			20.32			34.56								

Stay Safe

Data Source: Children's Services					DP: Various - Listed with each report								
Number of LAC and Child protection plans	The number of children and young people looked after by the Local Authority - March based on home address before coming into care					based on placement address			The number of children with child protection plans - March				
	<i>DP: S</i>								<i>DP: S</i>				
	2011		2012		2012		2011		2012				
Cluster	9		SUPP		22		12		9				
Wedge	0		505		442		0		367				
Leeds all	1439		1454		1454		947		1019				
Number of Common Assessments (CAFs)					Social Care			Social Care Referrals		Requests for Service			
<i>DP: C</i>					<i>DP:A</i>					<i>DP:S</i>			
		2008	2009	2010	2011	2009	2010	2011	Feb 11 - Jan 12				
Cluster	SUPP		SUPP		19	10	110	143	140	283			
Wedge	128		234		410	313	5505	5001	5218	11184			
Leeds all	457		849		1115	892	14248	13784	14000	30539			
Number of Child and Adolescent Mental Health Services referrals													
<i>DP: S</i>													
		aged 11 and under				aged 12-18		total referrals					
September-October		2009-10		2010-11		2009-10		2010-11		2009-10		2010-11	
Cluster	28		28		74		30		102		58		
Wedge	649		421		973		555		1622		976		
Leeds all	1767		1124		2976		1730		4743		2854		

Make a positive Contribution

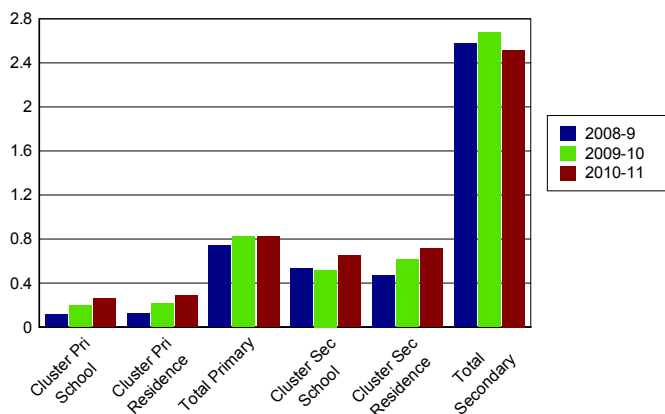
Data Source: West Yorkshire Police										<i>DP: C</i>	
Property Crime Number of recorded crimes for:	Burglary dwelling		Burglary elsewhere		Criminal damage		Robbery		Vehicle crime		
	10	11	10	11	10	11	10	11	10	11	
Cluster	83	106	131	67	200	124			92	68	
Wedge	2555	1992	2378	2038	5038	3731	415	301	3140	2801	
Leeds all	9508	8487	5681	5408	13599	10426	1297	1226	9168	7971	
Personal Crime Number of recorded crimes for:					Drug Offences		Theft from person		Violent crime		
					10	11	10	11	10	11	
Cluster					5	44	12	8	108	103	
Wedge					563	1049	1382	2023	5322	5047	
Leeds all					1248	3192	2235	3034	11233	10896	
Domestic Violence Incidents											
Number of incidents recorded with a domestic qualifier or disposition code on the Storm WYP incident recording system - 2011											
Cluster	162										
Wedge	5227										
Leeds all	14525										

Data Source: Youth Offending Service										<i>DP: A</i>	
Youth Offending	Number of Offenders					Number of Offences					
	07-08	08-09	09-10	10-11		07-08	08-09	09-10	10-11		
Cluster	37	17	14	15		53	39	23	22		
Wedge	818	610	484	500		1943	1418	946	913		
Leeds all	2741	2166	1522	1511		6331	4883	3134	3150		
April 2010 - March 2011 Number of offences by young offenders											
	Burglary	Breaches	Criminal Damage	Drugs Offences	Motoring and Vehicle	Other	Public Order	Theft and handling	Violence against the person		
Cluster	SUPP	SUPP	SUPP	SUPP	SUPP	SUPP	SUPP	SUPP	SUPP	SUPP	
Wedge	81	80	91	59	53	104	86	188	171		
Leeds all	291	270	328	204	218	358	282	612	587		

Data Source: School Census												DP: A		
Attendance and persistent absence by percentage	Attendance			Authorised Absence			Unauthorised Absence			Persistent Absence 15%				
	08-09	09-10	10-11	08-09	09-10	10-11	08-09	09-10	10-11	08-09	09-10	10-11		
Primary														
Cluster school	96	95	95	4	4	4	0.1	0.2	0.3	1.6	3.3	2.5		
Cluster residence	96	95	96	4	4	4	0.1	0.2	0.3	2.0	3.8	2.3		
Total primary	94	94	95	5	5	4	0.7	0.8	0.8	5.9	5.5	4.3		
Secondary														
Cluster school	95	94	95	5	5	5	0.5	0.5	0.6	4.7	5.5	4.7		
Cluster residence	95	94	95	5	5	4	0.5	0.6	0.7	5.1	5.7	4.3		
Total secondary	92	92	92	6	6	5	2.6	2.7	2.5	13.0	13.1	11.2		

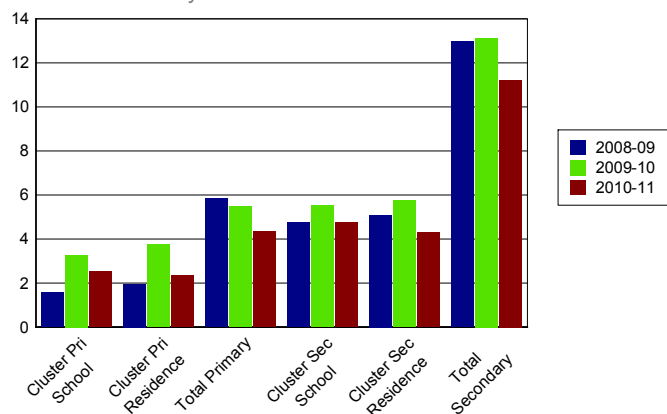
% Unauthorised Absence

2008-2011



% Persistent Absence

by 15% measure 2008-2011



Data Source: Children's Services												DP: A		
Exclusions	Fixed Term Exclusions						Permanent Exclusions							
	Number			Rate per thousand			Number			Rate per thousand				
Primary	08-09	09-10	10-11	08-09	09-10	10-11	08-09	09-10	10-11	08-09	09-10	10-11		
Cluster school	4	6	4	2.1	3.1	2.1	0	0	0	0.0	0.0	0.0		
Cluster residence	4	4	0	2.1	2.1	0.0	0	0	0	0.0	0.0	0.0		
Total primary	467	371	455	7.7	6.0	7.3	2	2	2	0.0	0.0	0.0		
Secondary														
Cluster school	0	1	0	0.0	0.5	0.0	0	0	0	0.0	0.0	0.0		
Cluster residence	3	4	0	2.9	4.0	0.0	0	0	0	0.0	0.0	0.0		
Total secondary	4350	4286	3806	93.6	93.1	83.2	52	57	44	1.1	1.2	1.0		

Enjoy and Achieve

Data Source: Keyphas and DFE performance tables

DP: A

Foundation Stage Profile Data The percentage of pupils achieving a good level of development (78+ points overall and 6+ points in all PSE and CCL strands)

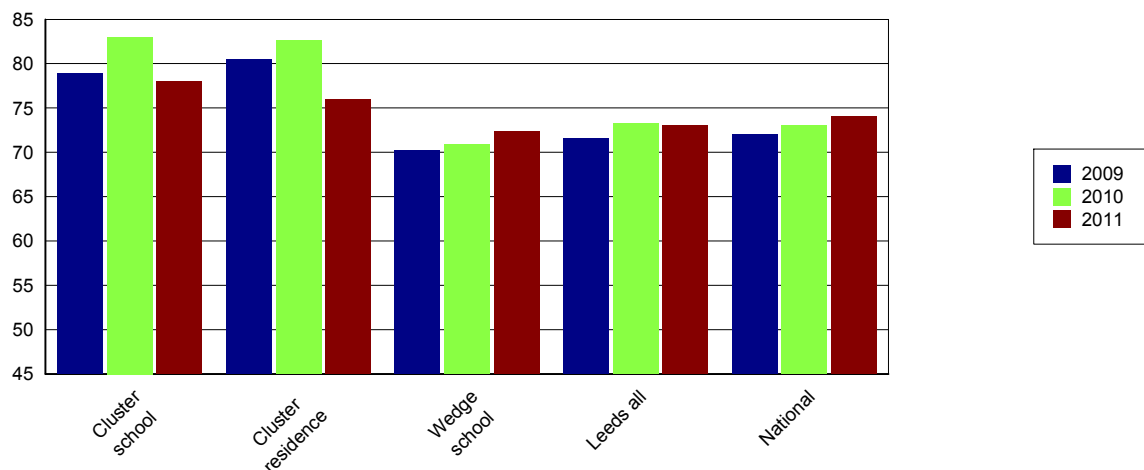
	2008	2009	2010	2011
Cluster school	49	45	53	63
Cluster residence	51	44	53	65
Leeds all	47	51	53	58

KS2 Data DP: A	English 4+			English 5+			Maths 4+			Maths 5+			English & Maths 4+		
	09	10	11	09	10	11	09	10	11	09	10	11	09	10	11
Cluster school	86	90	87	33	40	26	83	88	83	40	40	31	79	83	78
Cluster residence	88	89	86	37	39	24	83	88	80	42	40	30	81	83	76
Wedge school	78	78	81	23	27	27	76	77	78	30	29	28	70	71	72
Leeds all	79	79	81	28	31	32	77	79	78	33	31	32	72	73	73
National	80	80	82	29	33	29	79	79	80	35	34	35	72	73	74

KS2 Data - Expected progress	Made 2 levels of progress in English		Made 2 levels of progress in Maths	
	Number of pupils	Percentage	Number of pupils	Percentage
Cluster school	236	91.5	220	84.9
Wedge school	2294	88.4	2190	84.4
Leeds all	6334	88.6	6087	85.0
National		84.0		83.0

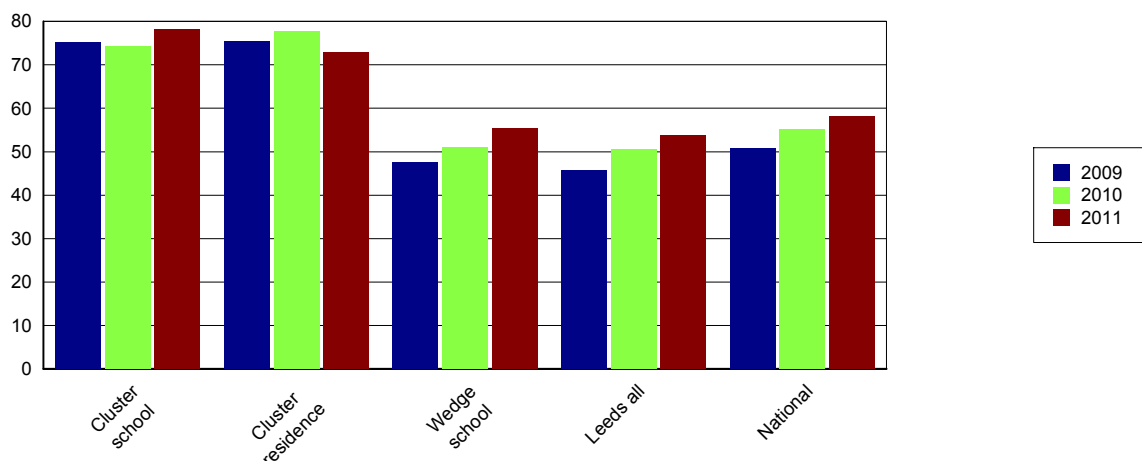
Percentage of English and Maths

Level 4+



Data Source: EPAS and DFE performance tables											DP: A		
The results are for GCSE & equivalent qualifications. The calculation of achieving no qualifications includes all qualifications													
KS4 Data	% of 5+ A*-C			% of 5+ A*-C inc Eng & Maths			% English Baccalaureate	% of 5+ A*-G			% achieving no qualifications		
	09	10	11	09	10	11		09	10	11	09	10	11
Cluster school	94	99	98	75	74	78	18	98	100	98	1		
Cluster residence	94	99	95	75	78	73	19	99	100	97	0	0	1
Wedge school	68	80	85	47	51	55	9	92	95	96	1	1	1
Leeds all	67	76	82	46	51	54	13	91	94	94	2	2	1
National	70	76	81	51	55	58	15	94	95	95	1 1		

Percentage 5 A*-C Including English and Maths



Achieve Economic Well Being

Key: Not in Employment, Education or Training (NEET), In Employment, Education or Training (EET), in Full time Education (FE)													
Data Source: November destination survey													DP: S
NEET/FE		Number of NEET			% NEET			Number of FE			% FE		
		2009	2010	2011	2009	2010	2011	2009	2010	2011	2009	2010	2011
Cluster school	Year 11	13	SUPP	8	4	SUPP	3	261	292	274	86	93	91
	Year 12	6	SUPP	5	2	SUPP	2	236	219	238	92	94	94
	Year 13	8	16	6	4	7	3	153	154	181	73	68	83
Cluster residence	Year 11	12	SUPP	7	6	SUPP	3	186	219	202	87	90	90
	Year 12	SUPP	SUPP	SUPP	SUPP	SUPP	SUPP	137	145	171	92	95	97
	Year 13	SUPP	9	5	SUPP	7	3	90	87	117	73	66	82
Leeds all	Year 11	646	393	357	8	5	5	6703	7194	6564	80	87	87
	Year 12	132	67	115	3	2	3	3436	3476	3550	90	93	93
	Year 13	121	135	120	5	4	4	2067	2350	2593	78	76	84

Data Source: Integrated Youth Support Service										DP: O
16-18 NEET and EET Nov 2011 to Jan 2012	NEET		EET		Not Known		Other Activity			
	Number	%	Number	%	Number	%	Number	%		
Cluster	17	2.7	613	96.8	SUPP	SUPP	SUPP	SUPP		
Wedge	589	7.3	7284	90.7	173	2.2	21	0.3		
Leeds all	1538	7.0	20170	91.7	343	1.6	58	0.3		

Please Note: Leeds totals for 16-18 NEET will not match publicised totals as published totals include a proportion of those whose status has expired